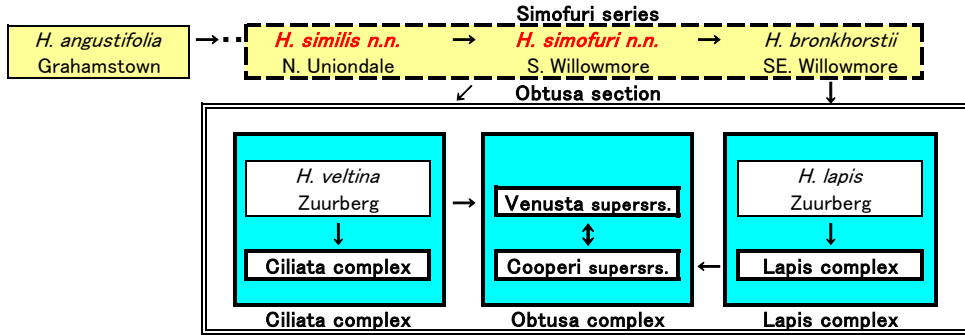
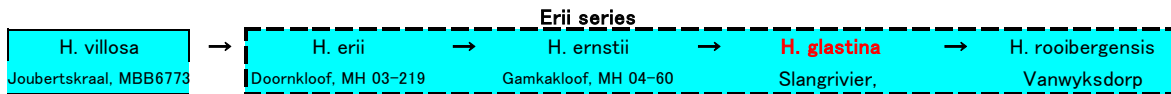
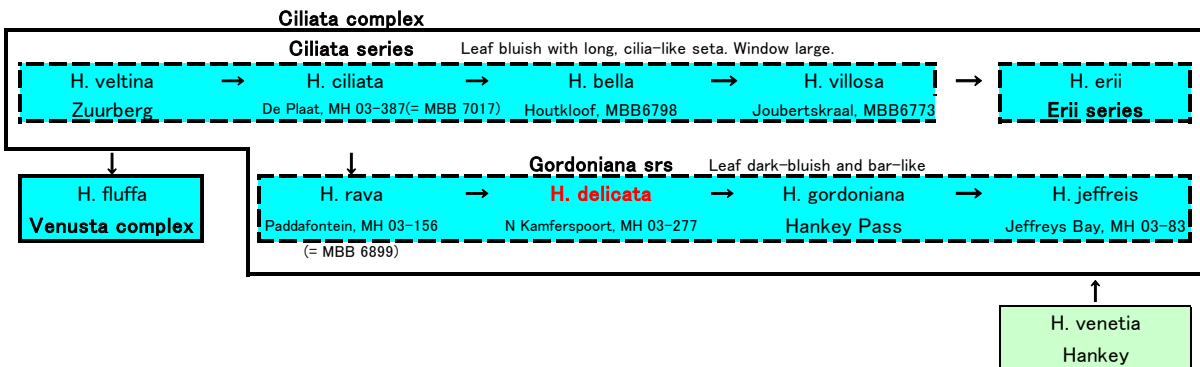


Fig. 1. Origin of Obtusa section (オブツサ節の起源)



Ciliata complex A descendants group of *H. veltina* with fine, cilia-like seta bluish leaves, very transparent window & soft, fine hairs (Ciliata + Gordoniana)



Bronkhorstii 系 = Obtusa section
Lapis complex + Obtusa complex

Lapis Complex (Lapis + Leightonii + Harryi + Carnea + Cyanea)
A descendants group of *H. bronkhorstii*

Fig. 8. Lapis complex (ラピス複合)

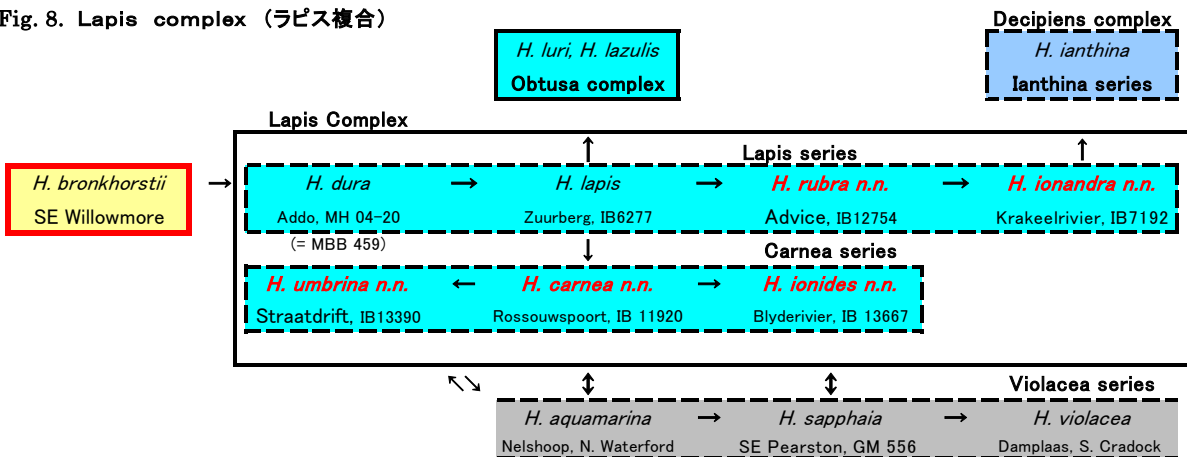


Fig. 2 Venusta superseries (ベヌスタ超系)

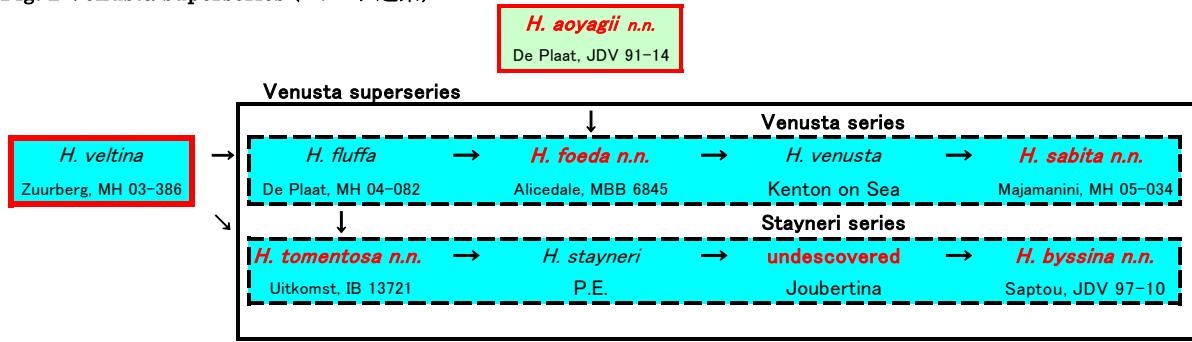


Fig. 3 Cooperi superseries (クーペリー超系)

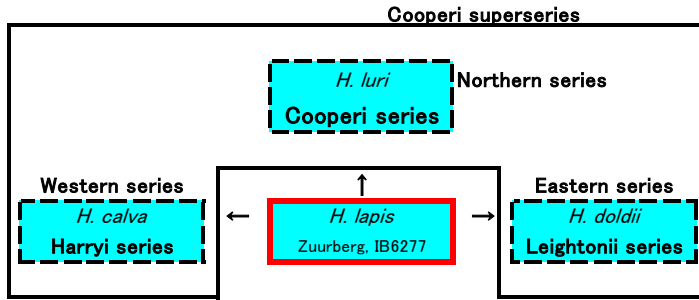


Fig. 7. Harryi series (ハリー系)

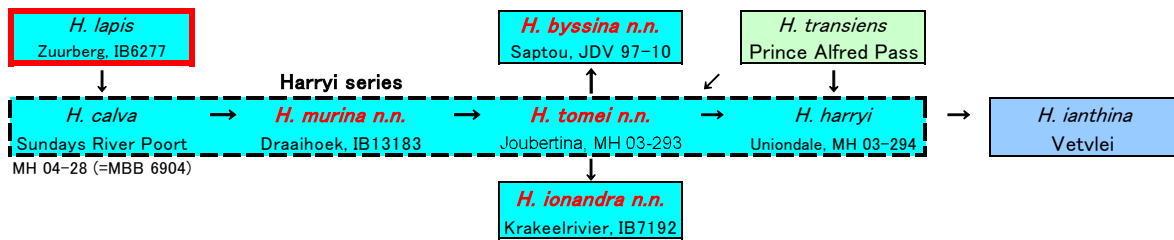


Fig. 6. Leightonii series (レイトニー系)

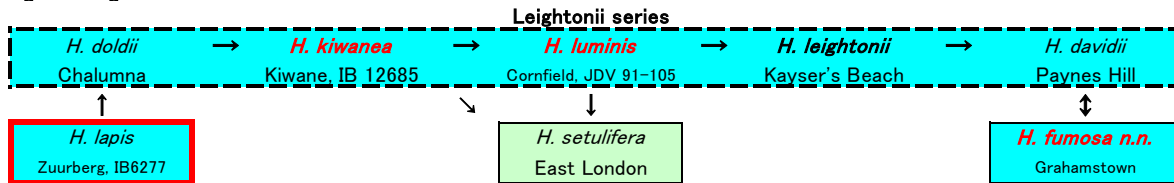


Fig. 4. Cooperi series (クーペリー系)

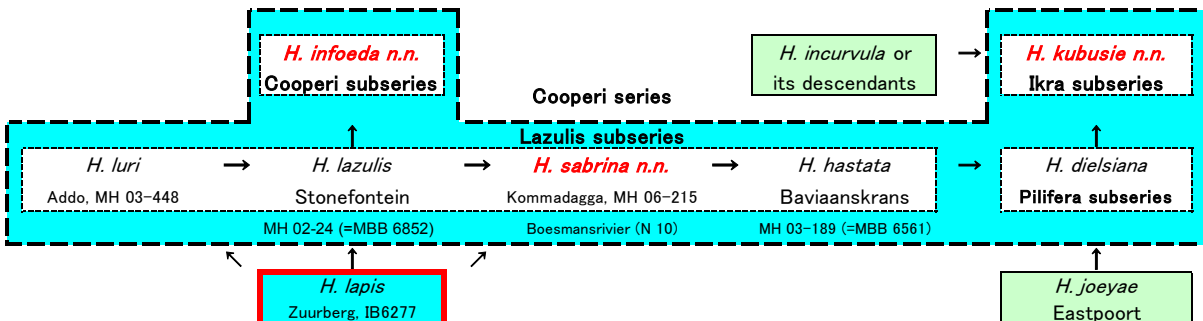


Fig. 5 Cooperi, Pilifera & Ikra subseries (クーペリー、ピリフェラ、イクラ亜系)

